

TO LET

- Two bedrooms
- Second floor apartment
- Open plan living/kitchen space
- Modern fitted kitchen
- Two bath/shower rooms
- Unfurnished
- Double glazing/gas central heating
- Communal parking facilities



Logan Road, Edmonton, London, N9
£1,600 Per Calendar Month

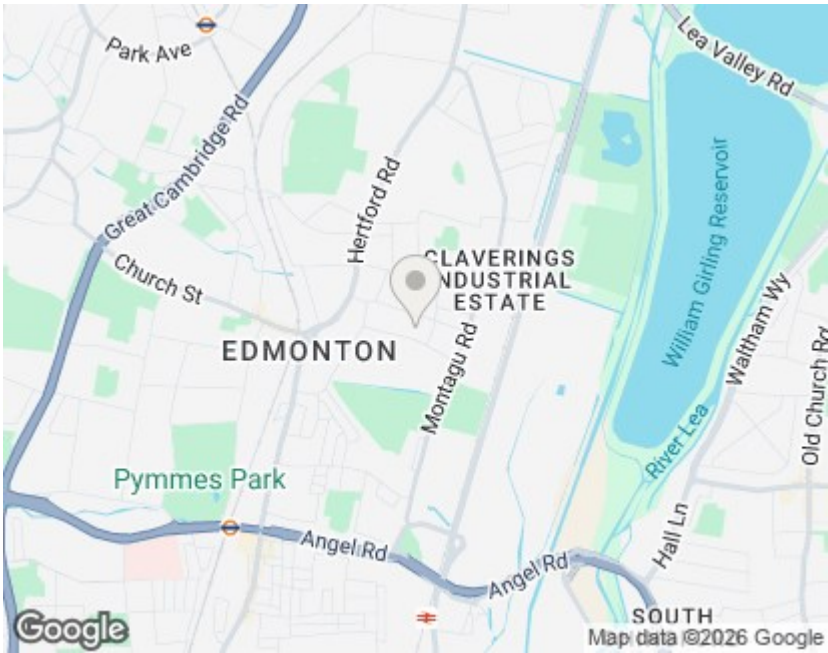
Anthony Webb
ESTATE AGENTS



Logan Road, Edmonton, London, N9

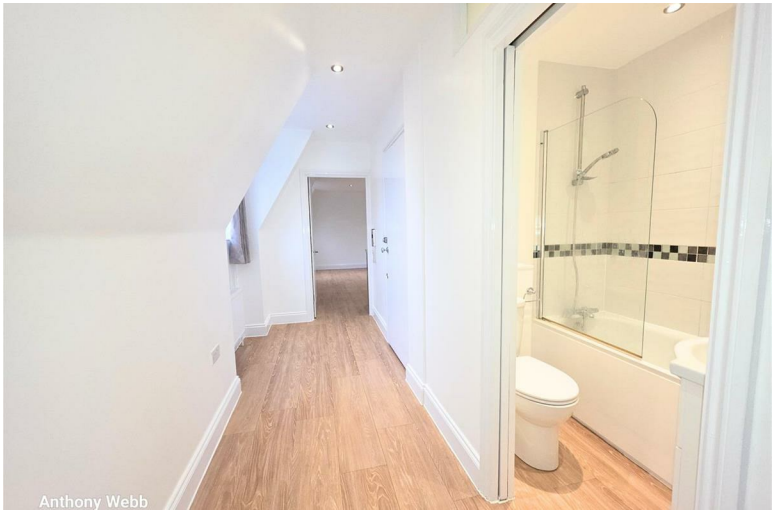
PURPOSE BUILT FLAT CLOSE TO EDMONTON GREEN STATION, SHOPS AND BUS ROUTES.

A well presented two bedroom second floor flat, which consists of an open plan living/ kitchen space, modern kitchen with island and appliances, two bath/shower rooms, one double bedroom, one single bedroom. Further benefits include laminate floors throughout, gas central heating, double glazing and communal gardens. The flat is offered UNFURNISHED and is available now.

Enfield council band C
5 weeks deposit £1846
Minimum annual household income to meet referencing criteria £48,000



Energy Efficiency Rating		Current	Potential
Very energy efficient - lower running costs			
<div><div></div><div>(92 plus) A</div></div>		83	83
<div><div></div><div>(81-91) B</div></div>			
<div><div></div><div>(69-80) C</div></div>			
<div><div></div><div>(55-68) D</div></div>			
<div><div></div><div>(39-54) E</div></div>			
<div><div></div><div>(21-38) F</div></div>			
<div><div></div><div>(1-20) G</div></div>			
Not energy efficient - higher running costs			
England & Wales		EU Directive 2002/91/EC	
			
Environmental Impact (CO ₂) Rating			
		Current	Potential
Very environmentally friendly - lower CO ₂ emissions			
<div><div></div><div>(92 plus) A</div></div>			
<div><div></div><div>(81-91) B</div></div>			
<div><div></div><div>(69-80) C</div></div>			
<div><div></div><div>(55-68) D</div></div>			
<div><div></div><div>(39-54) E</div></div>			
<div><div></div><div>(21-38) F</div></div>			
<div><div></div><div>(1-20) G</div></div>			
Not environmentally friendly - higher CO ₂ emissions			
England & Wales		EU Directive 2002/91/EC	
			



348 Green Lanes, Palmers Green, London N13 5TJ
020 8882 7888
palmersgreen@anthonywebb.co.uk
anthonywebb.co.uk